

## **Glyn Rd between Wilkinson Rd and Layritz Ave**

**February 25, 2020 To February 28, 2020**



The data presented here is for information purposes only and should not be considered authoritative for construction, geotechnical, engineering, navigational, legal, or other site-specific uses. The information shared is owned by the Transportation Division of the Engineering Department at the District of Saanich. Accuracy is not guaranteed.

Start Date: 24-Feb-20  
 Start Time: 0:03  
 Station ID: R0453-01

**Location 1: Glyn Rd between Wilkinson Rd and Layritz Ave**

Note:

DATE:	February 24, 2020		February 25, 2020		February 26, 2020		February 27, 2020		February 28, 2020		WK AVG		WK AVG	HOURLY
	MON		TUE		WED		THURS		FRI				CH 1+2	%
Time:	NB	SB	NB	SB	NB	SB	NB	SB	NB	SB	NB	SB		
12-1 AM			1	1	0	1	0	3			0	2	2	0.2%
1-2 AM			0	0	0	0	0	0			0	0	0	0.0%
2-3 AM			1	2	1	1	1	1			1	1	2	0.2%
3-4 AM			0	0	0	0	0	1			0	0	0	0.0%
4-5 AM			0	1	1	4	0	3			0	3	3	0.3%
5-6 AM			2	5	2	9	3	8			2	7	10	0.8%
6-7 AM			9	24	5	26	4	23			6	24	30	2.5%
7-8 AM			22	53	27	45	23	37			24	45	69	5.8%
8-9 AM			50	63	60	56	35	59			48	59	108	9.0%
9-10 AM			34	39	39	33	24	22			32	31	64	5.3%
10-11 AM			40	27	28	45	31	33			33	35	68	5.7%
11-12 PM			29	42	39	37	31	29			33	36	69	5.8%
12-1 PM			41	26	54	45	44	27			46	33	79	6.6%
1-2 PM			20	31	44	41	28	35			31	36	66	5.6%
2-3 PM			27	45	28	50	37	34			31	43	74	6.2%
3-4 PM			43	30	49	43	46	40			46	38	84	7.0%
4-5 PM			80	42	81	45	74	42			78	43	121	10.2%
5-6 PM			55	36	55	37	62	43			57	39	96	8.1%
6-7 PM			45	55	40	62	31	43			39	53	92	7.7%
7-8 PM			23	21	31	26	27	31			27	26	53	4.5%
8-9 PM			20	21	34	19	24	11			26	17	43	3.6%
9-10 PM			23	14	22	18	22	15			22	16	38	3.2%
10-11 PM			5	4	7	8	10	8			7	7	14	1.2%
11-12 AM			2	2	4	0	6	3			4	2	6	0.5%
<b>LANES</b>			<b>572</b>	<b>584</b>	<b>651</b>	<b>651</b>	<b>563</b>	<b>551</b>			<b>595</b>	<b>595</b>	<b>1191</b>	<b>100.0%</b>
<b>TOTAL</b>			<b>1156</b>		<b>1302</b>		<b>1114</b>				<b>1200</b>			
	MON		TUE		WED		THURS		FRI		WK AVG			

PEAK HOUR					TOTAL VEHICALS-PEAK PERIODS		2 HOUR PEAK INTERVALS					
MAX. 7 - 9 am PEAK HOUR	108	⇒	9.0%	between	8-9 AM	542	⇒	6 HR TOTAL	<b>2 HR AM (7 - 9 AM)</b>			
MAX. 7 - 11 am PEAK HOUR	108	⇒	9.0%	between	8-9 AM	394	⇒	4 HR TOTAL	VEH / HR	VEH / 2HR	2 HR %	
									7-8 AM	69	177	14.8%
									8-9 AM	108		
MAX. 11 am - 1 pm PEAK HOUR	79	⇒	6.6%	between	12-1 PM	<b>24 HOUR FACTORS</b>						
MAX. 11 am - 3 pm PEAK HOUR	79	⇒	6.6%	between	12-1 PM							
MAX. 4 - 6 pm PEAK HOUR	121	⇒	10.2%	between	4-5 PM							
MAX. 3 - 6 pm PEAK HOUR	121	⇒	10.2%	between	4-5 PM	2.20	⇒	6-24 HR FACT.	<b>2 HR NOON (11 - 1 PM)</b>			
						3.02	⇒	4-24 HR FACT.	VEH / HR	VEH / 2HR	2 HR %	
									11-12 PM	69	148	12.4%
									12-1 PM	79		
									<b>2 HR PM (4 - 6 PM)</b>			
									VEH / HR	VEH / 2HR	2 HR %	
									4-5 PM	121	217	18.3%
									5-6 PM	96		

# Glyn Rd between Wilkinson Rd and Layritz Ave

Northbound

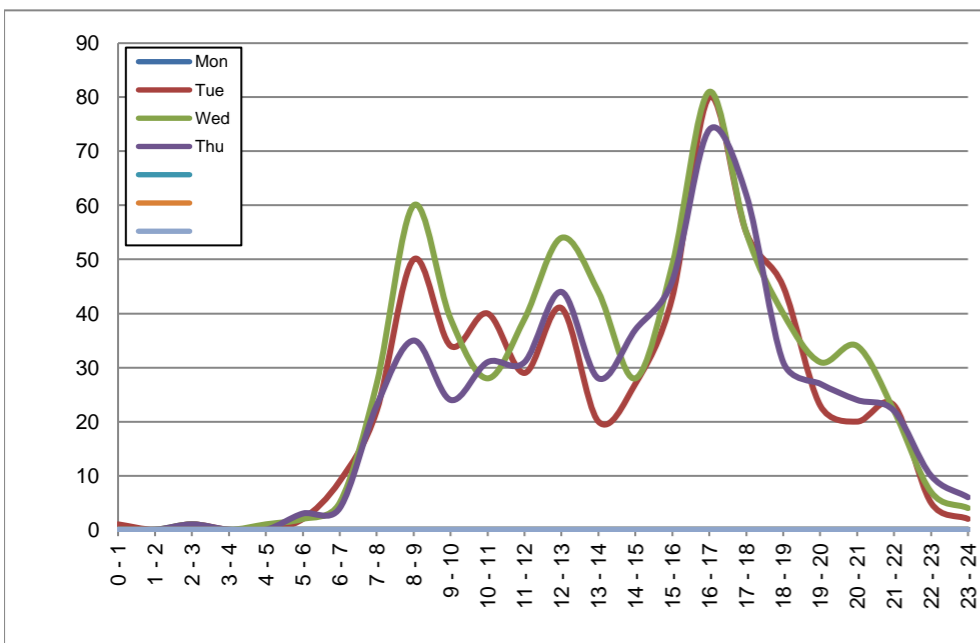
February 24, 2020 to February 27, 2020

## Hourly Volumes

Time Period	Mon	Tue	Wed	Thu			
	Feb 24	Feb 25	Feb 26	Feb 27			
0 - 1		1	0	0			
1 - 2		0	0	0			
2 - 3		1	1	1			
3 - 4		0	0	0			
4 - 5		0	1	0			
5 - 6		2	2	3			
6 - 7		9	5	4			
7 - 8		22	27	23			
8 - 9		50	60	35			
9 - 10		34	39	24			
10 - 11		40	28	31			
11 - 12		29	39	31			
12 - 13		41	54	44			
13 - 14		20	44	28			
14 - 15		27	28	37			
15 - 16		43	49	46			
16 - 17		80	81	74			
17 - 18		55	55	62			
18 - 19		45	40	31			
19 - 20		23	31	27			
20 - 21		20	34	24			
21 - 22		23	22	22			
22 - 23		5	7	10			
23 - 24		2	4	6			
<b>Day Total</b>		<b>572</b>	<b>651</b>	<b>563</b>			

## 15-Minute Volumes

Time Start	Mon	Tue	Wed	Thu				Time Start	Mon	Tue	Wed	Thu			
	Feb 24	Feb 25	Feb 26	Feb 27					Feb 24	Feb 25	Feb 26	Feb 27			
0:00		1	0	0				12:00		17	21	9			
0:15		0	0	0				12:15		10	13	14			
0:30		0	0	0				12:30		6	9	11			
0:45		0	0	0				12:45		8	11	10			
1:00		0	0	0				13:00		2	7	8			
1:15		0	0	0				13:15		8	15	6			
1:30		0	0	0				13:30		5	11	8			
1:45		0	0	0				13:45		5	11	6			
2:00		0	1	1				14:00		4	9	7			
2:15		0	0	0				14:15		8	6	7			
2:30		0	0	0				14:30		7	3	10			
2:45		1	0	0				14:45		8	10	13			
3:00		0	0	0				15:00		11	15	5			
3:15		0	0	0				15:15		7	10	12			
3:30		0	0	0				15:30		10	16	14			
3:45		0	0	0				15:45		15	8	15			
4:00		0	0	0				16:00		15	14	16			
4:15		0	0	0				16:15		18	16	13			
4:30		0	0	0				16:30		19	20	19			
4:45		0	1	0				16:45		28	31	26			
5:00		0	0	1				17:00		16	17	25			
5:15		1	0	1				17:15		17	15	15			
5:30		0	2	0				17:30		12	12	8			
5:45		1	0	1				17:45		10	11	14			
6:00		2	1	0				18:00		12	8	8			
6:15		2	1	1				18:15		10	7	7			
6:30		1	0	0				18:30		9	10	9			
6:45		4	3	3				18:45		14	15	7			
7:00		4	4	4				19:00		7	4	8			
7:15		6	6	6				19:15		2	7	3			
7:30		3	5	3				19:30		7	8	6			
7:45		9	12	10				19:45		7	12	10			
8:00		17	20	7				20:00		3	11	7			
8:15		12	17	11				20:15		4	11	9			
8:30		11	12	6				20:30		10	2	3			
8:45		10	11	11				20:45		3	10	5			
9:00		7	8	4				21:00		10	8	8			
9:15		6	11	8				21:15		4	7	8			
9:30		8	9	5				21:30		2	5	4			
9:45		13	11	7				21:45		7	2	2			
10:00		11	8	7				22:00		4	1	3			
10:15		7	8	8				22:15		0	3	4			
10:30		13	4	11				22:30		1	1	2			
10:45		9	8	5				22:45		0	2	1			
11:00		6	9	10				23:00		0	0	1			
11:15		9	11	7				23:15		1	1	4			
11:30		7	14	7				23:30		1	1	1			
11:45		7	5	7				23:45		0	2	0			



Site notes:

# Glyn Rd between Wilkinson Rd and Layritz Ave

Southbound

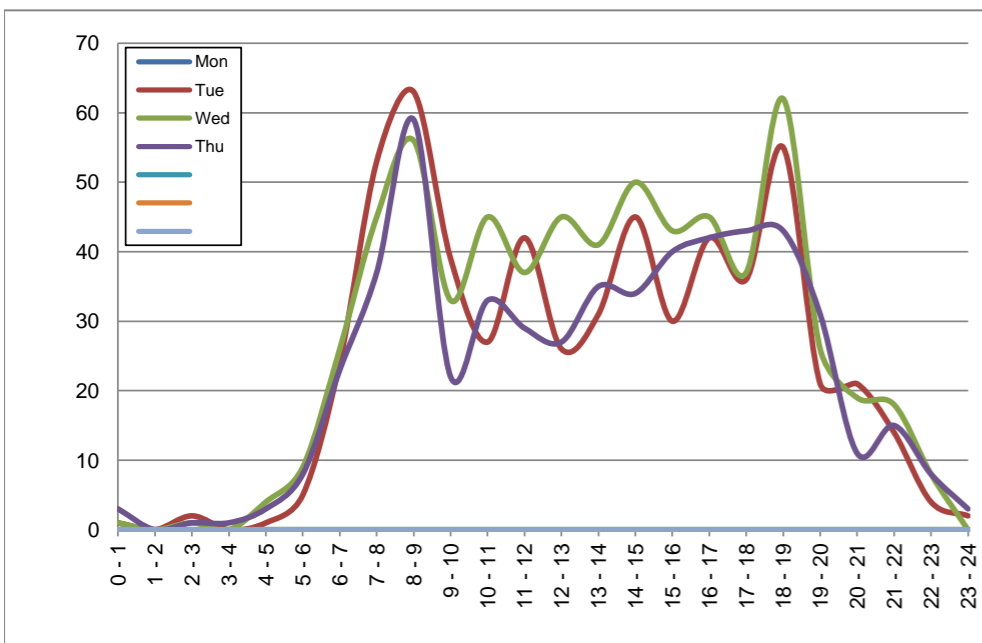
February 24, 2020 to February 27, 2020

## Hourly Volumes

Time Period	Mon	Tue	Wed	Thu			
	Feb 24	Feb 25	Feb 26	Feb 27			
0 - 1		1	1	3			
1 - 2		0	0	0			
2 - 3		2	1	1			
3 - 4		0	0	1			
4 - 5		1	4	3			
5 - 6		5	9	8			
6 - 7		24	26	23			
7 - 8		53	45	37			
8 - 9		63	56	59			
9 - 10		39	33	22			
10 - 11		27	45	33			
11 - 12		42	37	29			
12 - 13		26	45	27			
13 - 14		31	41	35			
14 - 15		45	50	34			
15 - 16		30	43	40			
16 - 17		42	45	42			
17 - 18		36	37	43			
18 - 19		55	62	43			
19 - 20		21	26	31			
20 - 21		21	19	11			
21 - 22		14	18	15			
22 - 23		4	8	8			
23 - 24		2	0	3			
<b>Day Total</b>		<b>584</b>	<b>651</b>	<b>551</b>			

## 15-Minute Volumes

Time Start	Mon	Tue	Wed	Thu				Time Start	Mon	Tue	Wed	Thu			
	Feb 24	Feb 25	Feb 26	Feb 27					Feb 24	Feb 25	Feb 26	Feb 27			
0:00		0	0	2				12:00		4	14	6			
0:15		1	1	1				12:15		11	10	6			
0:30		0	0	0				12:30		5	9	9			
0:45		0	0	0				12:45		6	12	6			
1:00		0	0	0				13:00		6	9	4			
1:15		0	0	0				13:15		9	10	10			
1:30		0	0	0				13:30		4	11	9			
1:45		0	0	0				13:45		12	11	12			
2:00		1	1	1				14:00		17	14	9			
2:15		0	0	0				14:15		10	16	9			
2:30		0	0	0				14:30		10	10	10			
2:45		1	0	0				14:45		8	10	6			
3:00		0	0	0				15:00		6	7	10			
3:15		0	0	1				15:15		8	12	12			
3:30		0	0	0				15:30		7	10	10			
3:45		0	0	0				15:45		9	14	8			
4:00		0	1	0				16:00		9	5	13			
4:15		0	1	0				16:15		10	20	11			
4:30		0	0	1				16:30		14	7	9			
4:45		1	2	2				16:45		9	13	9			
5:00		0	1	2				17:00		10	9	11			
5:15		0	1	1				17:15		13	8	7			
5:30		3	4	2				17:30		4	10	15			
5:45		2	3	3				17:45		9	10	10			
6:00		6	5	1				18:00		20	29	22			
6:15		9	5	6				18:15		10	14	10			
6:30		5	10	8				18:30		13	7	6			
6:45		4	6	8				18:45		12	12	5			
7:00		11	11	3				19:00		9	8	18			
7:15		11	8	9				19:15		7	6	8			
7:30		16	12	13				19:30		1	6	2			
7:45		15	14	12				19:45		4	6	3			
8:00		14	12	19				20:00		4	6	3			
8:15		16	16	16				20:15		10	5	6			
8:30		22	16	15				20:30		6	6	0			
8:45		11	12	9				20:45		1	2	2			
9:00		14	9	7				21:00		1	12	4			
9:15		10	7	6				21:15		5	1	4			
9:30		10	11	3				21:30		4	2	5			
9:45		5	6	6				21:45		4	3	2			
10:00		7	13	5				22:00		1	2	3			
10:15		10	10	10				22:15		2	5	2			
10:30		5	12	12				22:30		0	0	2			
10:45		5	10	6				22:45		1	1	1			
11:00		8	8	6				23:00		0	0	1			
11:15		13	12	9				23:15		0	0	1			
11:30		14	7	8				23:30		1	0	1			
11:45		7	10	6				23:45		1	0	0			



Site notes:

# Vehicle Speed Summary

Saanich Engineering Department

Count Id: [R0453-01](#)

Filename: [Glyn Rd between Wilkinson Rd and Layritz Ave-Feb-2020.xlsm](#)

**Location:** Glyn Rd between Wilkinson Rd and Layritz Ave

Note:

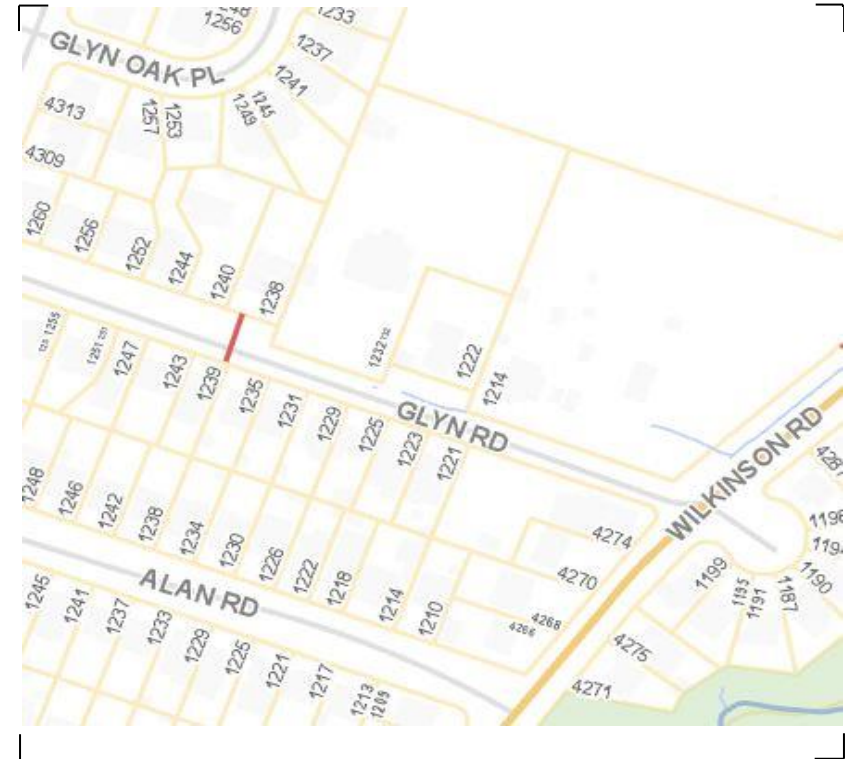
Direction: **North-South**

Dates: **February 25, 2020 To February 28, 2020**

*Filtered data*

AVG. SPEED	<b>24</b> mph	<b>38</b> km/h
50 % SPEED	<b>24</b> mph	<b>39</b> km/h
85 % SPEED	<b>30</b> mph	<b>48</b> km/h
95 % SPEED	<b>33</b> mph	<b>52</b> km/h

Location Map



**Glyn Rd between Wilkinson Rd and Layritz Ave**

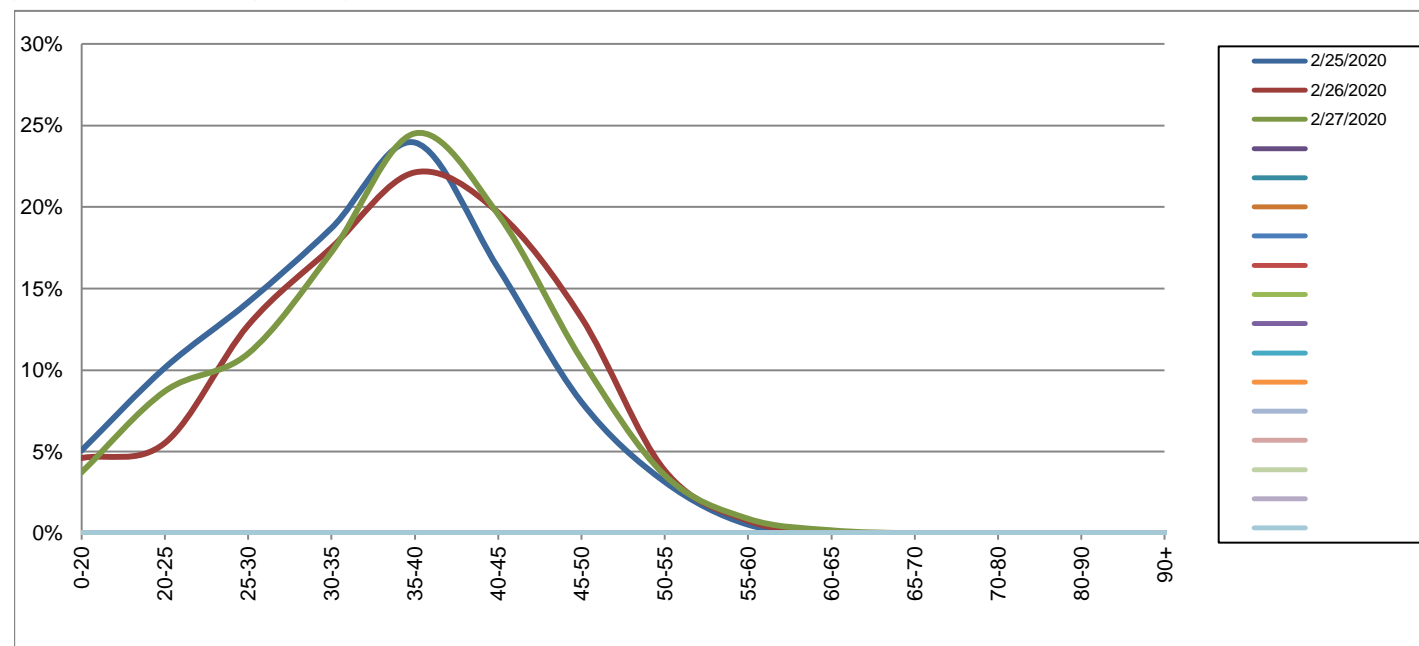
Northbound

February 25, 2020 to February 27, 2020

Daily Speed Bin Percentages															Daily Speed Bin Volumes														Total	Avg.
Bin #	1	2	3	4	5	6	7	8	9	10	11	12	13	14	1	2	3	4	5	6	7	8	9	10	11	12	13	14	Volume	Speed
Bin Speeds	0-20	20-25	25-30	30-35	35-40	40-45	45-50	50-55	55-60	60-65	65-70	70-80	80-90	90+	0-20	20-25	25-30	30-35	35-40	40-45	45-50	50-55	55-60	60-65	65-70	70-80	80-90	90+		
2/25/2020	5.1%	10.1%	14.2%	18.7%	24.0%	16.3%	8.0%	3.1%	0.5%	0.0%	0.0%	0.0%	0.0%	0.0%	29	58	81	107	137	93	46	18	3	0	0	0	0	0	572	34
2/26/2020	4.6%	5.5%	12.7%	17.5%	22.1%	19.7%	13.2%	3.8%	0.8%	0.0%	0.0%	0.0%	0.0%	0.0%	30	36	83	114	144	128	86	25	5	0	0	0	0	0	651	36
2/27/2020	3.7%	8.7%	11.0%	17.2%	24.5%	19.5%	10.7%	3.6%	0.9%	0.2%	0.0%	0.0%	0.0%	0.0%	21	49	62	97	138	110	60	20	5	1	0	0	0	0	563	36
<b>Total</b>	<b>4.5%</b>	<b>8.0%</b>	<b>12.7%</b>	<b>17.8%</b>	<b>23.5%</b>	<b>18.5%</b>	<b>10.8%</b>	<b>3.5%</b>	<b>0.7%</b>	<b>0.1%</b>	<b>0.0%</b>	<b>0.0%</b>	<b>0.0%</b>	<b>0.0%</b>	<b>80</b>	<b>143</b>	<b>226</b>	<b>318</b>	<b>419</b>	<b>331</b>	<b>192</b>	<b>63</b>	<b>13</b>	<b>1</b>	<b>0</b>	<b>0</b>	<b>0</b>	<b>0</b>	<b>1786</b>	<b>36</b>

**Speed Data Summary**

Bin #	1	2	3	4	5	6	7	8	9	10	11	12	13	14	Total
Bin Speeds	0-20	20-25	25-30	30-35	35-40	40-45	45-50	50-55	55-60	60-65	65-70	70-80	80-90	90+	
Survey Total	80	143	226	318	419	331	192	63	13	0	0	0	0	0	1786
% Total	4.5%	8.0%	12.7%	17.8%	23.5%	18.5%	10.8%	3.5%	0.7%	0.1%	0.0%	0.0%	0.0%	0.0%	100%
Accumulated %	4.5%	12.5%	25.1%	42.9%	66.4%	84.9%	95.7%	99.2%	99.9%	100.0%	100.0%	100.0%	100.0%	100%	
Inverse Accum. %	95.5%	87.5%	74.9%	57.1%	33.6%	15.1%	4.3%	0.8%	0.1%	0.0%	0.0%	0.0%	0.0%	0.0%	
Average Speed	36 KM/H														



Site notes:

Glyn Rd between Wilkinson Rd and Layritz Ave

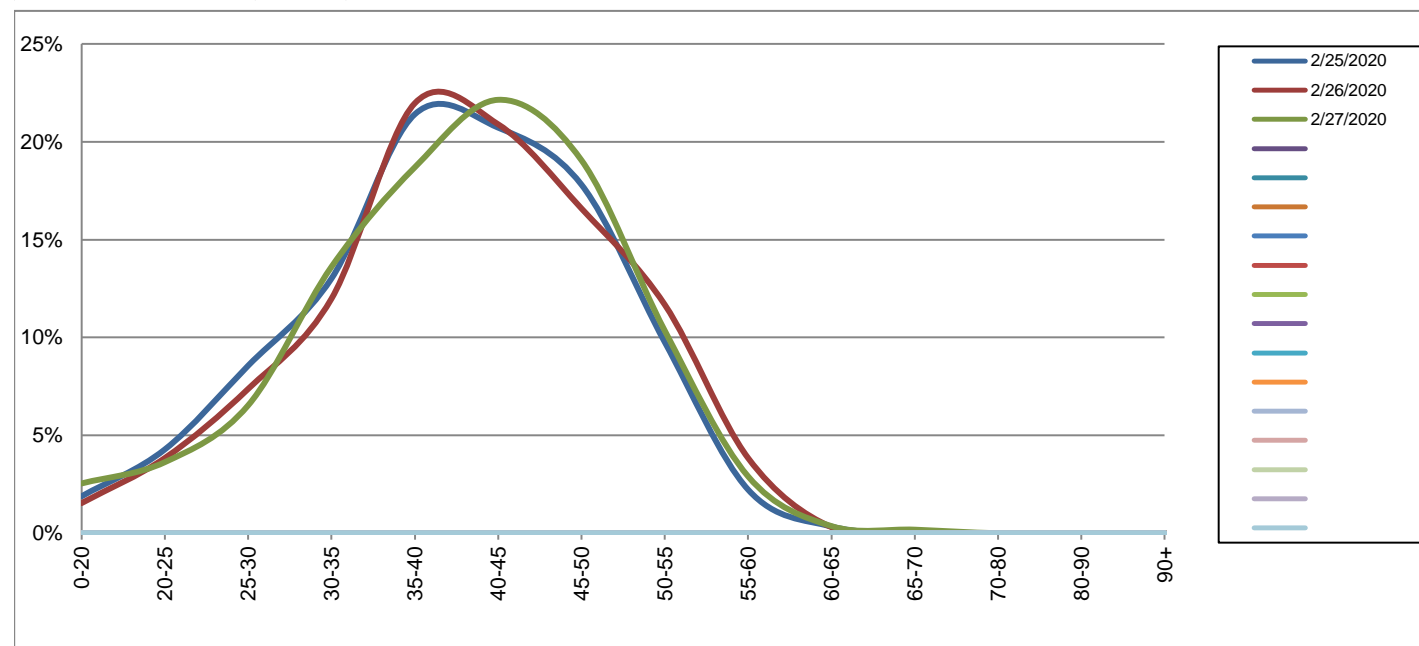
Southbound

February 25, 2020 to February 27, 2020

Daily Speed Bin Percentages															Daily Speed Bin Volumes														Total	Avg. Speed
Bin #	1	2	3	4	5	6	7	8	9	10	11	12	13	14	1	2	3	4	5	6	7	8	9	10	11	12	13	14		
Bin Speeds	0-20	20-25	25-30	30-35	35-40	40-45	45-50	50-55	55-60	60-65	65-70	70-80	80-90	90+	0-20	20-25	25-30	30-35	35-40	40-45	45-50	50-55	55-60	60-65	65-70	70-80	80-90	90+		
2/25/2020	1.9%	4.3%	8.6%	13.0%	21.4%	20.7%	17.8%	9.8%	2.2%	0.3%	0.0%	0.0%	0.0%	0.0%	11	25	50	76	125	121	104	57	13	2	0	0	0	0	584	40
2/26/2020	1.5%	3.8%	7.4%	12.0%	22.0%	20.9%	16.6%	11.7%	3.8%	0.3%	0.0%	0.0%	0.0%	0.0%	10	25	48	78	143	136	108	76	25	2	0	0	0	0	651	40
2/27/2020	2.5%	3.6%	6.5%	13.6%	18.7%	22.1%	19.1%	10.3%	2.9%	0.4%	0.2%	0.0%	0.0%	0.0%	14	20	36	75	103	122	105	57	16	2	1	0	0	0	551	40
<b>Total</b>	2.0%	3.9%	7.5%	12.8%	20.8%	21.2%	17.7%	10.6%	3.0%	0.3%	0.1%	0.0%	0.0%	0.0%	35	70	134	229	371	379	317	190	54	6	1	0	0	0	1786	40

Speed Data Summary

Bin #	1	2	3	4	5	6	7	8	9	10	11	12	13	14	Total
Bin Speeds	0-20	20-25	25-30	30-35	35-40	40-45	45-50	50-55	55-60	60-65	65-70	70-80	80-90	90+	
Survey Total	35	70	134	229	371	379	317	190	54	6	1	0	0	0	1786
% Total	2.0%	3.9%	7.5%	12.8%	20.8%	21.2%	17.7%	10.6%	3.0%	0.3%	0.1%	0.0%	0.0%	0.0%	100%
Accumulated %	2.0%	5.9%	13.4%	26.2%	47.0%	68.2%	85.9%	96.6%	99.6%	99.9%	100.0%	100.0%	100.0%	100%	
Inverse Accum. %	98.0%	94.1%	86.6%	73.8%	53.0%	31.8%	14.1%	3.4%	0.4%	0.1%	0.0%	0.0%	0.0%	0.0%	
Average Speed	40 KM/H														



Site notes:

**Glyn Rd between Wilkinson Rd and Layritz Ave**

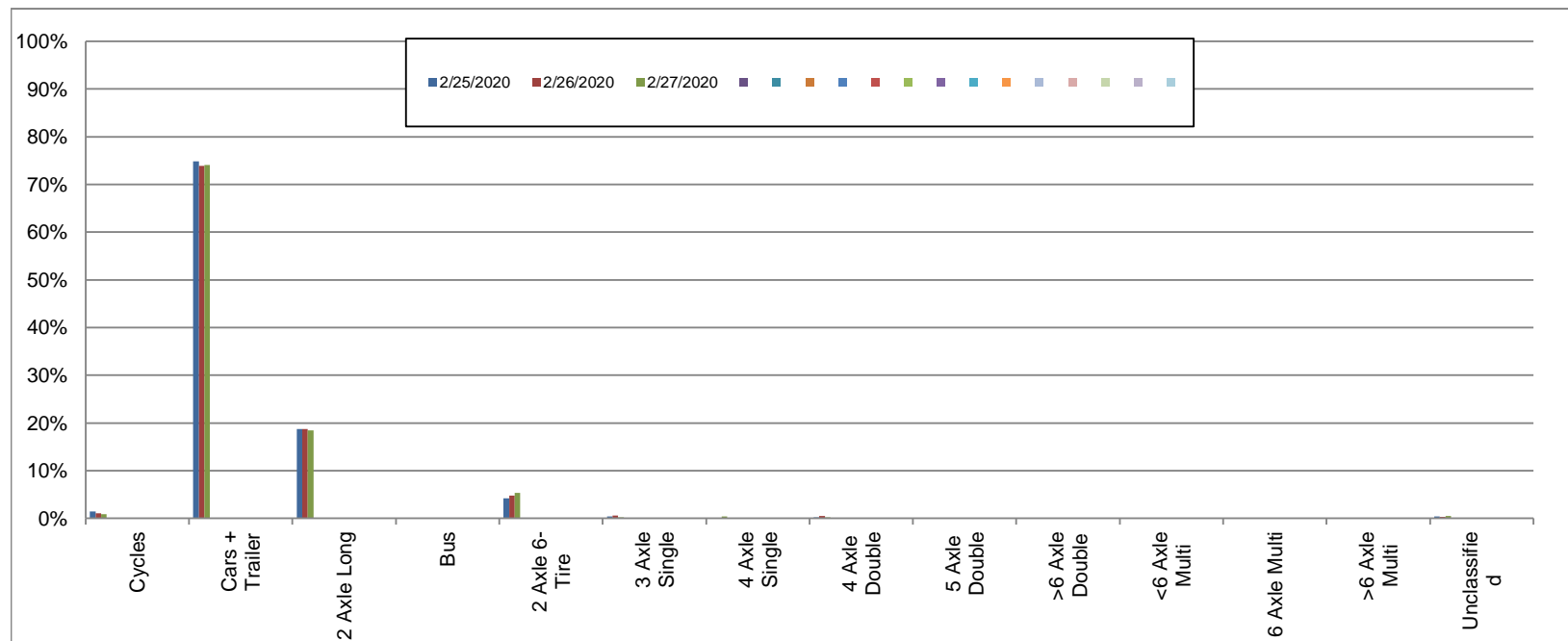
Northbound

February 25, 2020 to February 27, 2020

Daily Class Bin Percentages															Daily Class Bin Volumes															
Bin #	1	2	3	4	5	6	7	8	9	10	11	12	13	14	1	2	3	4	5	6	7	8	9	10	11	12	13	14	Total Volume	
Bin Class	Cycles	Cars + Trailer	2 Axle Long	Bus	2 Axle 6-Tire	3 Axle Single	4 Axle Single	4 Axle Double	5 Axle Double	>6 Axle Double	<6 Axle Multi	6 Axle Multi	>6 Axle Multi	Unclassified	Cycles	Cars + Trailer	2 Axle Long	Bus	2 Axle 6-Tire	3 Axle Single	4 Axle Single	4 Axle Double	5 Axle Double	>6 Axle Double	<6 Axle Multi	6 Axle Multi	>6 Axle Multi	Unclassified		
2/25/2020	1.4%	74.8%	18.7%	0.0%	4.2%	0.3%	0.0%	0.2%	0.0%	0.0%	0.0%	0.0%	0.0%	0.3%	8	428	107	0	24	2	0	1	0	0	0	0	0	0	2	572
2/26/2020	1.1%	73.9%	18.7%	0.0%	4.8%	0.6%	0.0%	0.5%	0.2%	0.0%	0.0%	0.0%	0.0%	0.3%	7	481	122	0	31	4	0	3	1	0	0	0	0	0	2	651
2/27/2020	0.9%	74.1%	18.5%	0.0%	5.3%	0.2%	0.4%	0.2%	0.0%	0.0%	0.0%	0.0%	0.0%	0.5%	5	417	104	0	30	1	2	1	0	0	0	0	0	3	563	
<b>Total</b>	<b>1.1%</b>	<b>74.2%</b>	<b>18.6%</b>	<b>0.0%</b>	<b>4.8%</b>	<b>0.4%</b>	<b>0.1%</b>	<b>0.3%</b>	<b>0.1%</b>	<b>0.0%</b>	<b>0.0%</b>	<b>0.0%</b>	<b>0.0%</b>	<b>0.4%</b>	<b>20</b>	<b>1326</b>	<b>333</b>	<b>0</b>	<b>85</b>	<b>7</b>	<b>2</b>	<b>5</b>	<b>1</b>	<b>0</b>	<b>0</b>	<b>0</b>	<b>0</b>	<b>7</b>	<b>1786</b>	

**Class Data Summary**

Bin #	1	2	3	4	5	6	7	8	9	10	11	12	13	14	Total Volume
Bin Class	Cycles	Cars + Trailer	2 Axle Long	Bus	2 Axle 6-Tire	3 Axle Single	4 Axle Single	4 Axle Double	5 Axle Double	>6 Axle Double	<6 Axle Multi	6 Axle Multi	>6 Axle Multi	Unclassified	Total Volume
<b>Survey Total</b>	20	1326	333	0	85	7	2	5	1	0	0	0	0	7	1786
<b>% Total</b>	1.1%	74.2%	18.6%	0.0%	4.8%	0.4%	0.1%	0.3%	0.1%	0.0%	0.0%	0.0%	0.0%	0.4%	100%
<b>Accumulated %</b>	1.1%	75.4%	94.0%	94.0%	98.8%	99.2%	99.3%	99.6%	99.6%	99.6%	99.6%	99.6%	99.6%	100.0%	
<b>Inv. Accum. %</b>	98.9%	24.6%	6.0%	6.0%	1.2%	0.8%	0.7%	0.4%	0.4%	0.4%	0.4%	0.4%	0.4%	0.0%	



**Classification Descriptions**

Bin #	Bin Description
1	Motorcycles
2	Passenger cars, including those with recreational trailers
3	2-axle pick-ups, vans, and RVs, including those with recreational trailers
4	Buses
5	2-axle, 6-tire single units
6	3-axle single units
7	4-axle single units
8	3-axle or 4-axle double unit
9	5-axle double unit
10	6-, 7-, or 8-axle double unit
11	5-axle multiple unit
12	6-axle multiple unit
13	7-or-more-axle multiple unit
14	Vehicles that could not be classified

Site notes:



**Glyn Rd between Wilkinson Rd and Layritz Ave**

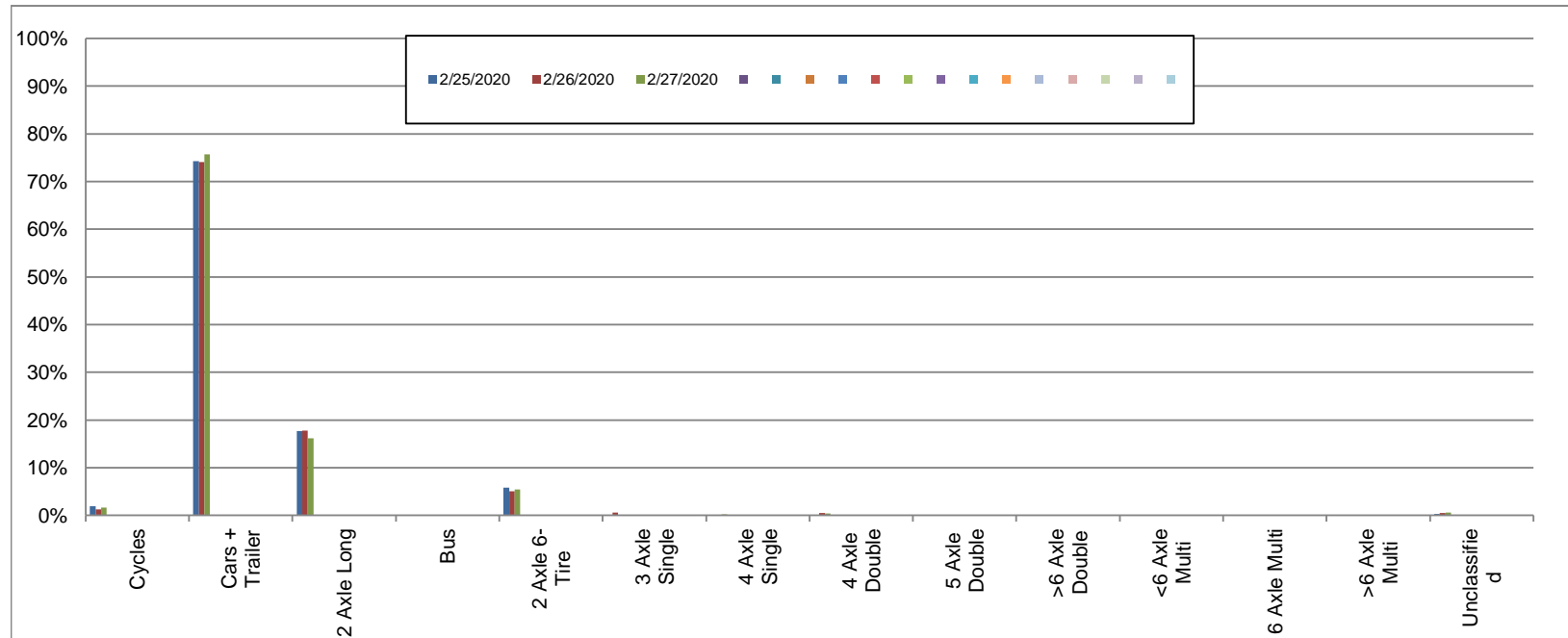
Southbound

February 25, 2020 to February 27, 2020

Daily Class Bin Percentages															Daily Class Bin Volumes											Total Volume				
Bin #	1	2	3	4	5	6	7	8	9	10	11	12	13	14	1	2	3	4	5	6	7	8	9	10	11		12	13	14	
Bin Class	Cycles	Cars + Trailer	2 Axle Long	Bus	2 Axle 6-Tire	3 Axle Single	4 Axle Single	4 Axle Double	5 Axle Double	>6 Axle Double	<6 Axle Multi	6 Axle Multi	>6 Axle Multi	Unclassified	Cycles	Cars + Trailer	2 Axle Long	Bus	2 Axle 6-Tire	3 Axle Single	4 Axle Single	4 Axle Double	5 Axle Double	>6 Axle Double	<6 Axle Multi	6 Axle Multi	>6 Axle Multi	Unclassified		
2/25/2020	1.9%	74.3%	17.6%	0.0%	5.8%	0.0%	0.0%	0.0%	0.0%	0.0%	0.0%	0.0%	0.0%	0.3%	11	434	103	0	34	0	0	0	0	0	0	0	0	0	2	584
2/26/2020	1.2%	74.0%	17.8%	0.2%	5.1%	0.6%	0.0%	0.5%	0.2%	0.0%	0.0%	0.0%	0.0%	0.5%	8	482	116	1	33	4	0	3	1	0	0	0	0	0	3	651
2/27/2020	1.6%	75.7%	16.2%	0.0%	5.4%	0.0%	0.2%	0.4%	0.0%	0.0%	0.0%	0.0%	0.0%	0.5%	9	417	89	0	30	0	1	2	0	0	0	0	0	0	3	551
<b>Total</b>	<b>1.6%</b>	<b>74.6%</b>	<b>17.2%</b>	<b>0.1%</b>	<b>5.4%</b>	<b>0.2%</b>	<b>0.1%</b>	<b>0.3%</b>	<b>0.1%</b>	<b>0.0%</b>	<b>0.0%</b>	<b>0.0%</b>	<b>0.0%</b>	<b>0.4%</b>	<b>28</b>	<b>1333</b>	<b>308</b>	<b>1</b>	<b>97</b>	<b>4</b>	<b>1</b>	<b>5</b>	<b>1</b>	<b>0</b>	<b>0</b>	<b>0</b>	<b>0</b>	<b>8</b>	<b>1786</b>	

**Class Data Summary**

Bin #	1	2	3	4	5	6	7	8	9	10	11	12	13	14	Total Volume
Bin Class	Cycles	Cars + Trailer	2 Axle Long	Bus	2 Axle 6-Tire	3 Axle Single	4 Axle Single	4 Axle Double	5 Axle Double	>6 Axle Double	<6 Axle Multi	6 Axle Multi	>6 Axle Multi	Unclassified	
<b>Survey Total</b>	28	1333	308	1	97	4	1	5	1	0	0	0	0	8	1786
<b>% Total</b>	1.6%	74.6%	17.2%	0.1%	5.4%	0.2%	0.1%	0.3%	0.1%	0.0%	0.0%	0.0%	0.0%	0.4%	100%
<b>Accumulated %</b>	1.6%	76.2%	93.4%	93.5%	98.9%	99.2%	99.2%	99.5%	99.6%	99.6%	99.6%	99.6%	99.6%	100.0%	
<b>Inv. Accum. %</b>	98.4%	23.8%	6.6%	6.5%	1.1%	0.8%	0.8%	0.5%	0.4%	0.4%	0.4%	0.4%	0.4%	0.0%	



**Classification Descriptions**

Bin #	Bin Description
1	Motorcycles
2	Passenger cars, including those with recreational trailers
3	2-axle pick-ups, vans, and RVs, including those with recreational trailers
4	Buses
5	2-axle, 6-tire single units
6	3-axle single units
7	4-axle single units
8	3-axle or 4-axle double unit
9	5-axle double unit
10	6-, 7-, or 8-axle double unit
11	5-axle multiple unit
12	6-axle multiple unit
13	7-or-more-axle multiple unit
14	Vehicles that could not be classified

Site notes: